



(c) crown copyright

T.C.

S/S.M.V. ~~From~~ STELHAND

Flag DUTCH

Owner

Registered LLOYDS REGISTER

Built 1920

Type

G.T. 8156

N.T. 5128

D.W 12388

Speed 13K. 12½K

CONSN:

Coat

Oil 42 TONS

Armed 4" LA GUN

D.G. 13/7/40 COLLIDOREY. 3/8/40

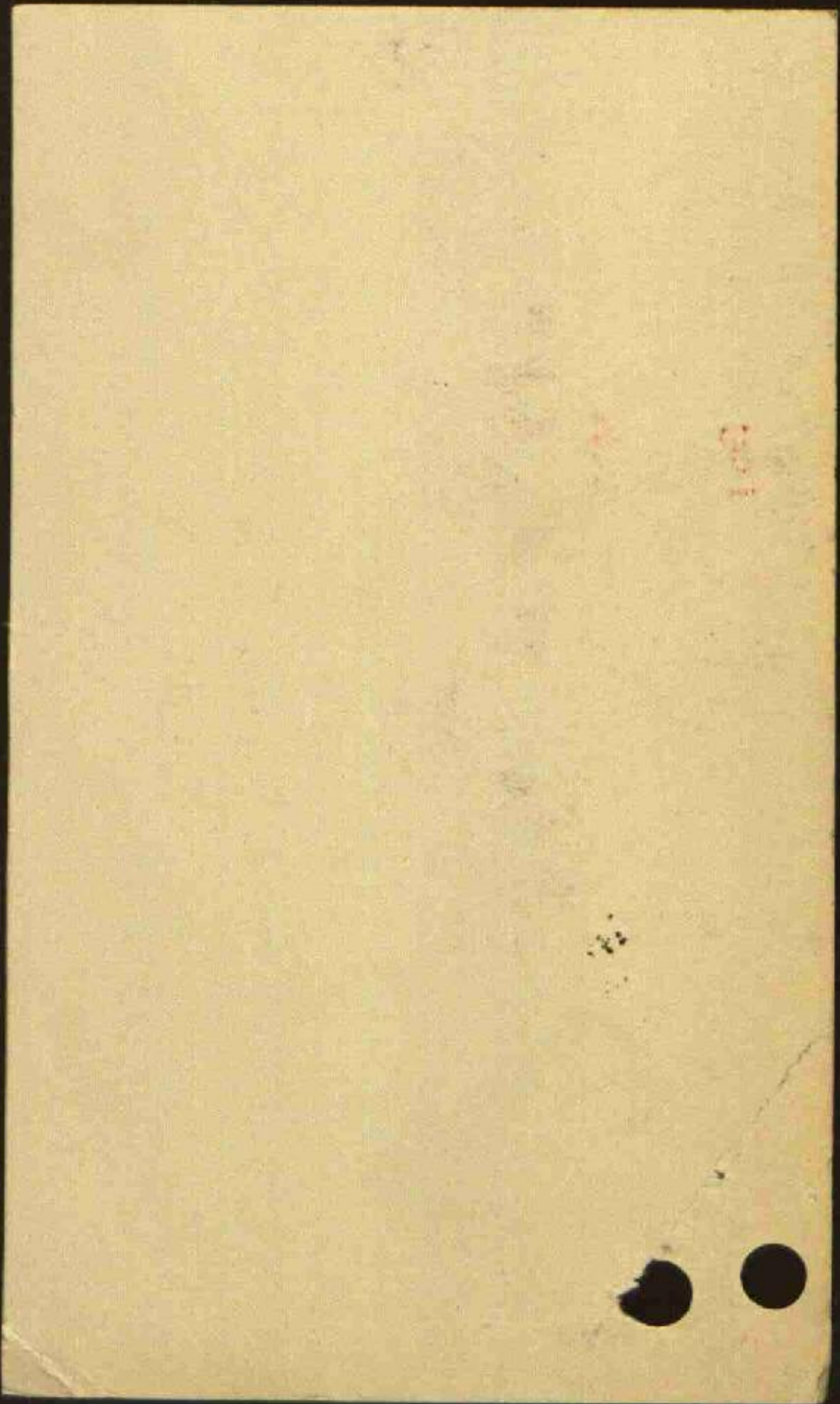
Length

Beam

Draft: Loaded

Light

Ship Warrant No.



FINSTELLAND

s/s

Built 1920

CAPT. C. S. RIETBERGEN

*Liverpool
Weymouth*

Owners:

Royal Holland Lloyd.

London Agents: Wm. H. Muller & Co. (London) Ltd.

Gross	Nett	D.W.	Cubic	Decks	Speed	Cons.
8156	5128	12388	695 (G) 655 (B)	two	695	655

Weymouth arr. 2/5/40. Psd. DOVER Eastbound 17.15 26.5.40 having left WEYMOUTH

26.5.40 for LONDON. Psd. SOUTHBEND 17.45, 27.5.40. Arrived *Bromwich*

29/5/40 for King Geo V. Dock - *Shelley* London & Anchored SOUTHBEND 21.6.40 - PASSED DOVE

WESTWARDS 15.20 on 23.6.40 - PASSED HORSBAND FORT INWARDS 13.50 on 24.6.40. - SAILED

SOUTHAMPTON 26.6.40 - Pd. HORSBAND FORT 08.30 on 28.6.40 - 1-7.40 *Yapetael* 35 miles

Ast of *Wolcott*, *Stinking well* *Fudden* *Koken*, *Count* *Steen*. *Arwood* is starting by.

2-7.40 *Highs* report a log has been sent to *Finstelland*. - ARR. FALMOUTH 5.7.40

5th FALMOUTH 18.2.41. ARR CYDE 20.2.41 AND SAILED 23.2.41. ADMIRALTY REPORT ON 27.2.41:

" BOMBED LAST NIGHT, HIT, BUT IS SALVAGEABLE. THIS SHIP WILL TAKE HER IN TOW. "

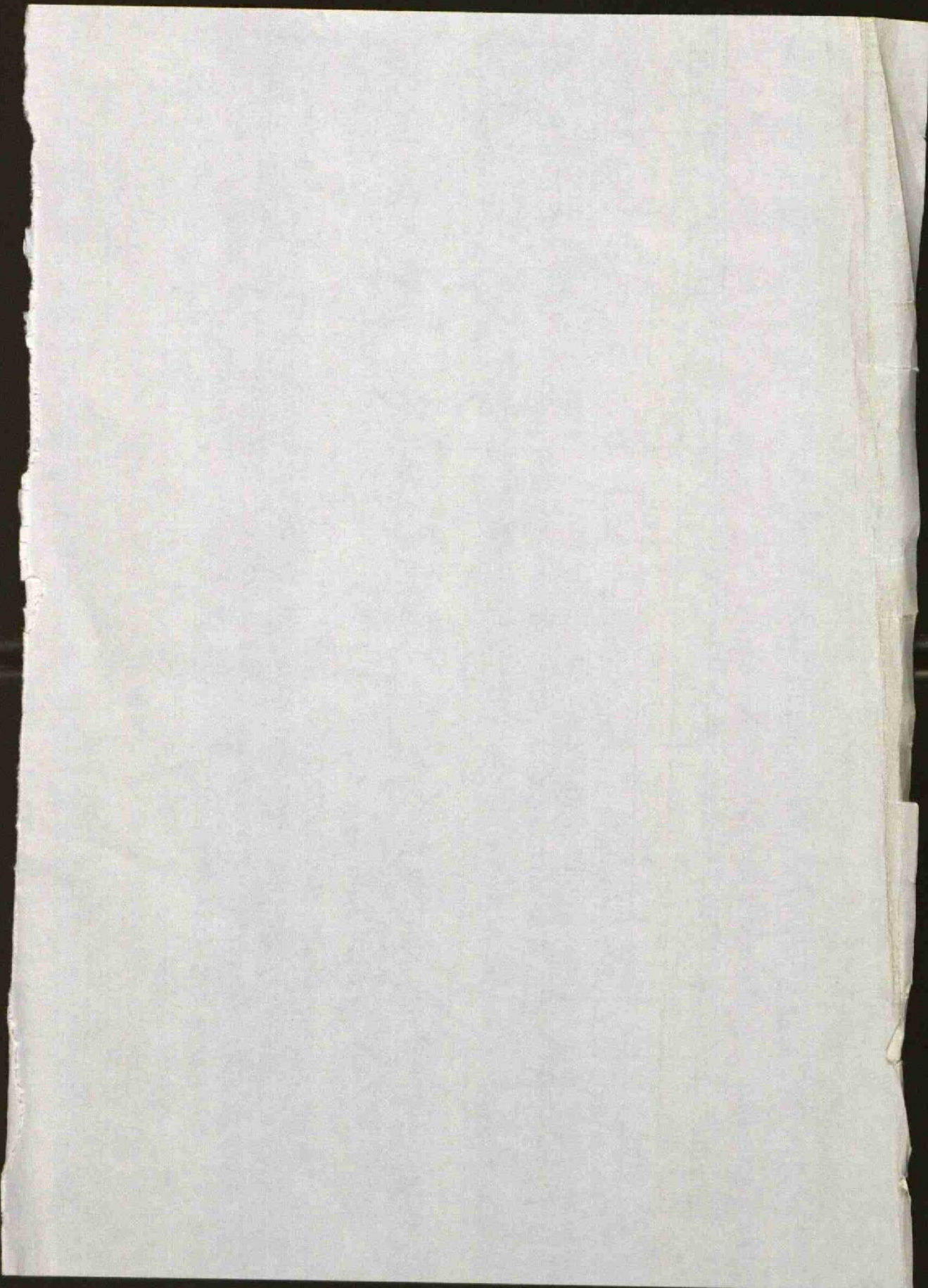
27.2.41 ADMIRALTY REPORT: FIRST MESSAGE: WEATHER DETERIORATING. WATER GRIPPING, CREW STILL

ON BOARD: HM VESSEL STRANDING BY. " SECOND MESSAGE: NOS. 1 AND 3 HOLDS FLOODED. PROPELLER

OUT OF WATER. WILL REMAIN AFLOAT. " 3.3.41 ADMIRALTY REPORT: 44 SURVIVORS LANDED

LIVERPOOL 2.3.41 " CAPTAIN RIETBERGEN WAS DROWNED WHEN LEAVING THE SHIP. THE BODY

X



Name of vessel	Voyage	Arrd. at Destn.	Intermediate Movements	Service
Name of vessel AMSTELLAND	Voyage 13k	Arrd. at Destn.	Owners Built 1930 DW. 12388 G.T. 8156 <i>Repaired. W/E. 07/10. 1800 hrs 3/8/40. Amended 4" x 9" for 1324. 27/11/40 Card No. /</i>	Service DUICH
Year 1939	Hamburg 19/3 - B. Aires La Plata 29/4 Hamburg	18/4 4/6	B. Amsterdam 23/3 Sd Las Palmas 29/3 Ar Rio Janeiro 10/4 Ar Santos 12/4. Sa Santos 14/4 Sd Montevideo 29/4. Ar Santos 2/5. Ar Santos 5/5. Ar Bahia 9/5. Sd 10/5 Ar Las Palmas 19/5. Ar A'dam 25/5 Ar Amsterdam 11/6. Pa Ruygenes 16/6. Sa Las Palmas 21/6. Ar: Rio Janeiro 3/7. Ar. Montevideo. 10/7. Ar Santos 26/7. Ar Bahia. 2/8. Sd 9/8. <i>Had machinery damage 3/8</i> Sd Las Palmas 12/8 Pa Ruygenes 17/8 Ar Amsterdam 18/8	Fuel - Oil. Con. 20: - 42 TONS. Speed - 13k. Knots 14K
Hamburg 10/6 B. Aires	12/7			
Buenos Aires 7 ²² Hamburg	24/8			
Hamburg 1/9 Amsterdam	2/9.			

Catalogue Reference: BT 389/33

Name of Vessel **AMSTELLAN 7**

" S. N. 8156

Year 1939

Voyage	Artd. at Destn.	Intermediate Movements	Service
Amsterdam 9/9 Suvaeris Aries		Pd Dungeness 9/9. Or Sao Palmar 13/9 Sa 14/9 At Bahia 14/9. Lat. 25° 9. Or Rio Janeiro 27/9 Or Santos 29/9. Or Montevideo 3/10	
Suvaeris Aries 14/10 Amsterdam	21/11	Or Santos 16/10 Or Sa 20/10 Or Bahia 24/10 Or Sa 25/10 Or Sao Palmar 4/11 Or Lond. Devon 11/11 Pd Dover 12/11 Pd Valant 13/11 Or Sao Palmar 17/11 Or Sa 17/11 Or Sa Devon 20/11	
Amsterdam 9/11 Breems Aries	11/140	Or Sao Palmar 17/11 Or Sa 17/11 Pd Dover 12/11 Pd Valant 13/11 Or Sao Palmar 17/11 Or Sa 17/11 Or Sa Devon 20/11	
Suvaeris Aries 12/11 - Rotterdam (CT 1425)		Or Sao Palmar 17/11 Or Sa 17/11 Pd Dover 12/11 Pd Valant 13/11 Or Sao Palmar 17/11 Or Sa 17/11 Or Sa Devon 20/11	
Amsterdam. B' Aries	11/140	Or Sao Palmar 17/11 Or Sa 17/11 Pd Dover 12/11 Pd Valant 13/11 Or Sao Palmar 17/11 Or Sa 17/11 Or Sa Devon 20/11	

Bergo Ballast
 Pressive draught (CT 1629)

(S9519C) W 1 18823/4965 7000 7/38 H, J, K & L, Ltd GP 684

Name of Ship

AMSTERDAM

Owners

13 Kunts
Built 1920 No. 12088

G.T.

8/56

Card No. 2

Current Voyage & Cargo

Artd. at Destn.

Intermediate Movements

Anticipated Movements

Prospective Cargo

Year 1940

B. River 1/11 Amsterdam
Amsterdam 2 1/2 B. River

8/2
24 1/2

on Rio Palmas 29 1/2
Ankward Borno 2
anchored T. Downs 26 1/2
Pd T. Jungenees 27 1/2
on Teneriffe 4/3
on Rio Janeiro 15/3
Sd Santos 17/3
on Rio Grande 19/3
on Montevideo 23/3
on Santos 24 9/4
Pd Rio Janeiro 24
on Bahia 25 1/4
Pd Las Palmas 25 1/4
onch Downs 1/5
Pd Dover 1/5
on Weymouth Bay 2/5
on Rosno

10000 rickens
4000 rickens
C.L. 13/2
C.T. 1812
for Rio Janeiro. 1 month
for Santos. (C.T. 2113)
10000 rickens
C.L. 2781
C.T. 4981
C.T. 4981
C.T. 4981

B. River 2/4 Aldam
obituary
London

29 1/5

25 1/4 tons
Saldanha, T. Med. (C.L. 26 1/4)

25 1/4 tons
Saldanha, T. Med. (C.L. 26 1/4)

T.M. 971/38

Time chartered by H. J. Shipping delivered on 12/6/40

Name of Ship

~~550~~ egT 8156

Current Voyage & Cargo

Year 1940 Voy Card

Arrd. at Destn.

Intermediate Movements

Anticipated Movements

Prospective Cargo

London ²¹ R. Lines

Pa London ²¹
Repairing at London, general A.R.P. degrading.
due Sept. 20/6/40.
Old ²⁶ Buenos Aires Lines
Pd Dover ²³
Pd Withford ²⁴ Bd 'm.
Sd Southampton ²⁶ 26/6.
Pd Withford ²⁸ Or Folkestone ⁵

Allocated to liner division (HT/RS) (6470)
False star line, ¹⁷ Proposed voyage: - UK/S. America/UK. (not 1/6)

N. Voy: Southampton ²⁶ to Dabrat / R. Lines / Freetown / U.K. (T. 75625/6)

Damaged by torpedoed ⁷.
In tow. Under repair Folkestone - Steam damaged
starts 12/4 6am 15/7, Repairs to take 5/6 months (prior list No 1, 14/8)
Repairs completed (RHS 26)

Awaiting conveyance requires water Exp by 20/2 in ORC 290 (with initials 2/5)

Bombed in 54° 12' N 16° 00' W 26/2. Hk. but is salvable
try to be sent. See Ballast. Convey by List 225.
(S1874C) WT 2909/358 10000 9/39 H. J. R. S. L. Ld Gp 694

1941
Folkestone ¹⁸ 18/7
(63. 19/2)
Blythe ²³ 23/2 Buenos Aires ^(25/2)

Ar. R. Clyde 20/2.
(66. 21/2)
abandoned + sinking in 52° 10' N. 14° 38' W
+ drifting eastwards. Bore 45 on R.M. Ship.
Consulted and likely to last. Under present
weather conditions, multi arrival 4 days.
Convey by List 227.